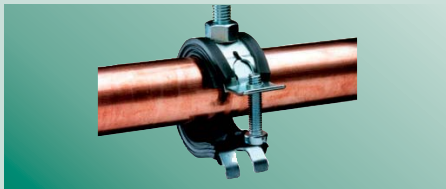
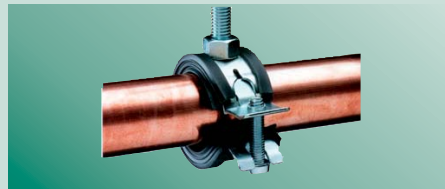


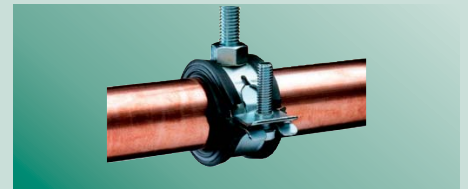
BISMAT®



Hinge clamp around pipe



Press to close clamp



Fix screw to lock clamp

Fast installation thanks to a unique locking system

- Rubber lined, noise insulated
- For plastic and metal pipes
- Easy open/close locking system
- Keeps pipe in place with no tools required
- One-handed use for greater safety

BISMAT®

BISMAT® 2000



BISMAT® 2000 is a unique rubber lined pipe clamp. This two-part clamp has a hinged side and the BISMAT® single screw patented locking system. The BISMAT® quick locking system is easy to close with one hand which makes it easier and faster for installation. The rubber lining is made of UV-resistant EPDM and is noise insulating according to DIN 4109. The BISMAT® 2000 is zinc plated for corrosion resistance.

Features and benefits

- rubber lined, noise insulated
- BISMAT® patented locking system
- clamp easy to close with one hand
- UV-resistant black EPDM rubber lining, noise insulating according to DIN 4109
- zinc plated

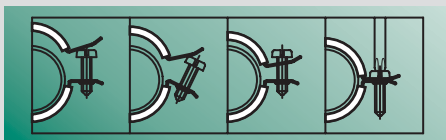
BISMAT® 5000



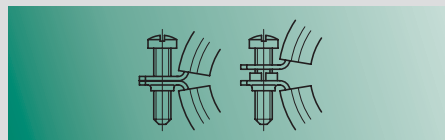
BISMAT® 5000 is a rubber lined pipe clamp uniquely designed for plastic pipe applications. This two-part clamp has a hinged side and the BISMAT® patented single screw locking system. The special green UV-resistant EPDM rubber lining is flush and especially designed to improve sliding properties for plastic pipes. The patented removable spacer washers between flanges make this clamp suitable for sliding or fixed points. Noise insulating according to DIN 4109. The BISMAT® 5000 is zinc plated for corrosion resistance.

Features and benefits

- rubber lined, noise insulated
- BISMAT® patented locking system
- clamp easy to close with one hand
- special green UV-resistant EPDM rubber lining for use with plastic pipes, noise insulating according to DIN 4109
- allows both sliding and fixed points
- zinc plated



BISMAT® patented locking system for easy and fast installation of pipe clamps.



BISMAT® 5000 can either be used as a fixed point or with spacer as a sliding point.

RAL

The maximum allowed load is tested and certified according to RAL-GZ 655/A which is drawn up by the 'Gütegemeinschaft Rohr-befestigung'. In the test a maximum allowed deflection is taken into consideration.

The 'RAL-Gütezeichen' is exclusively awarded to products that meet high standards and is a proof of quality!



North America

Raywal North America Inc.
 48893 West Road
 Wixom, MI 48393
 Toll free (877) RAYWAL1
 Main (248) 374 3100
 Fax (248) 374 3232
 info@raywal-usa.com

Walraven Group

Mijdrecht (NL) · Tienen (BE) · Bayreuth (DE)
 Grenoble (FR) · Banbury (GB)
 Mladá Boleslav (CZ) · Kraków (PL)

www.raywal-usa.com

Your wholesaler

